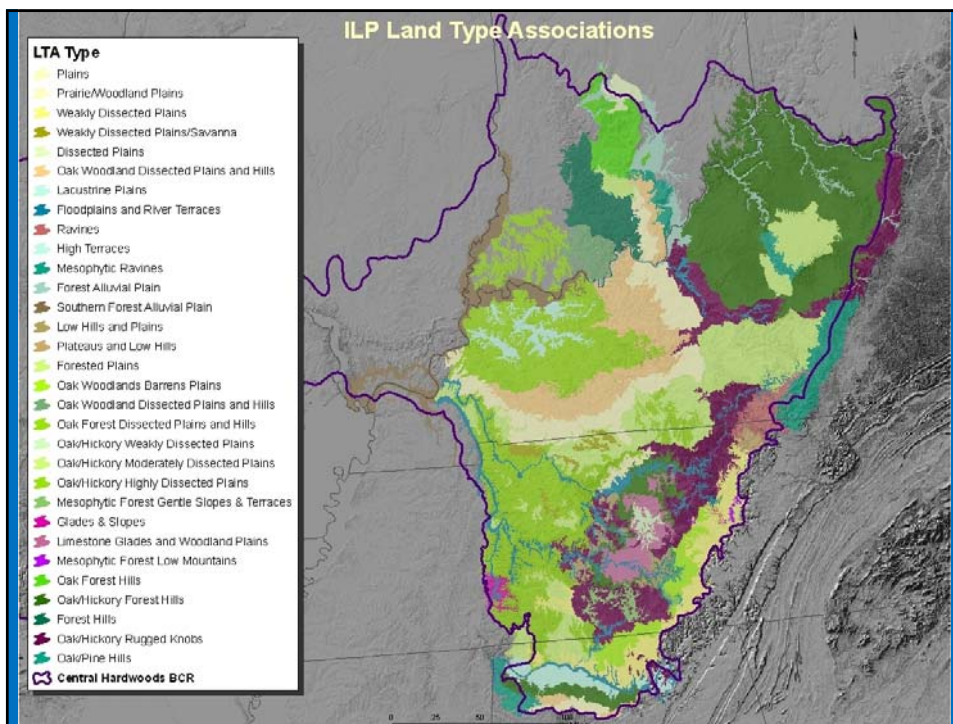


Scenario Example

		Continental Population Objective	CHJV Population Objective	Baseline			Scenario Population Estimate	Population Change	Percent Change (*100)	Sub %Change	
				Population Estimate	LCL	UCL				Min	Max
Continental Priorities	BACS	Increase 100%	Increase 100%	1	0	0	193	192	19200.00	0.0	57.0
	BWWA	Increase 50%	Increase 100%	49,853	0	0	82,680	32,827	65.85	0.0	217.7
	BHNU	Increase 50%	Increase 50%	5,261	0	0	20,231	14,970	284.55	-14.3	19825.0
	CERW	Increase 100%	Increase 100%	35,107	0	0	35,521	414	1.18	-3.4	10.2
	KEWA	Increase 50%	Maintain	293,075	0	0	286,417	-6,658	-2.27	-6.7	0.0
	PABU	Increase 100%	Maintain	25,625	0	0	38,597	12,972	50.62	-11.1	229.7
	PRAW	Increase 50%	Increase 100%	156,814	0	0	344,851	188,037	119.91	0.0	357.5
	PROW	Increase 50%	Maintain	75,918	0	0	75,809	-109	-0.14	-2.1	0.0
	WOTH	Increase 50%	Maintain	990,815	0	0	1,004,364	13,549	1.37	-3.9	9.8
WEWA	Maint/Incr	Maint/Incr	174,657	0	0	170,741	-3,916	-2.24	-6.7	0.0	
Stewardship Sp.	ACFL	Maintain	Maintain	667,416	0	0	652,673	-14,743	-2.21	-6.3	0.0
	CACH	Maintain	Maintain	1,854,224	0	0	1,958,655	104,431	5.63	-0.3	20.3
	CWWI	Maintain	Maint/Incr	0	0	0	0	0	#DIV/0!	0.0	0.0
	HOWA	Maintain	Maintain	198,117	0	0	193,134	-4,983	-2.52	-6.7	0.0
	LOWA	Maintain	Maintain	38,306	0	0	37,924	-382	-1.00	-4.0	0.0
	YTVI	Maintain	Maintain	152,615	0	0	149,128	-3,487	-2.28	-6.7	0.0
	YTWA	Maintain	Maintain	261,943	0	0	256,064	-5,879	-2.24	-6.5	0.0
BCR Priorities	BGGN		Maint/Incr	5,162,018	0	0	5,462,900	300,882	5.83	-2.9	23.1
	CHSW		Maintain	0	0	0	0	0	#DIV/0!	0.0	0.0
	EAWP		Increase 100%	927,840	0	0	1,005,108	77,268	8.33	0.0	35.4
	FISP		Increase 100%	818,463	0	0	939,705	121,242	14.81	0.0	61.5
	WPWI		Increase 100%	0	0	0	0	0	#DIV/0!	0.0	0.0
	YBCU		Increase 100%	909,527	0	0	930,519	20,992	2.31	-2.8	14.1
	YBCH		Maint/Incr	1,195,810	0	0	4,150,039	2,954,229	247.05	0.0	903.9



Potential Vegetation Types

- 1) Prairie/Grassland
- 2) Glade/Savanna (< 20% canopy)
- 3) Oak Open Woodland (20-50% canopy)
- 4) Oak Closed Woodland (50-80% canopy)
- 5) Pine/Oak Closed Woodland (50-80% canopy)
- 6) Forest (> 80% canopy)
- 7) Pine/Bluestem Open Woodland (20-50% canopy)
- 8) Prairie/Savanna (Barrens)

LTA Types

- OZ Alluvial Plains
- OZ Prairie Plains
- OZ Prairie/Savanna Plains
- TP Loess Prairie Hills and Blufflands
- OZ Oak Savanna/Woodland Dissected Plains
- OZ Pine-Oak Woodland Dissected Plains
- OZ Oak Woodland Dissected Plains and Hills
- OZ Glades/Woodlands
- OZ Igneous Knobs
- OZ Oak Woodland Forest Hills
- OZ Forest Breaks
- OZ Oak Pine Hills

Land Type Associations

Land Type Associations	Landscape Positions								
	Floodplains	Valleys	Low wet slopes	High wet slopes	Low dry slopes	High dry slopes	Gentle uplands	Flat uplands	Ridges
Tipton Upland Prairie Plain	6	4	4	4	3	3	8	1	3
Southeastern Oak Savanna/Woodland Plain	6	6	6	4	4	4	4	4	4
West Hills Oak Pine Woodland Forest Hills	6	6	6	5	5	7	7	8	5
Grandin Pine-Oak Woodland Dissected Plain	6	5	5	5	5	7	7	8	5
Lake Ozark Oak Woodland/Forest Breaks	6	6	6	4	4	4	4	6	4
Nangua R. Oak Woodland/Forest Breaks	6	6	6	4	4	4	4	6	4
Lower Sac. River Oak Woodland Hills	6	4	4	4	4	3	3	8	4
Middle Osage River Oak Woodland Hills	6	4	4	4	4	3	3	8	4
Truman Lake Oak Woodland Hills	6	4	4	4	4	3	3	8	4
Lower Osage R. Oak Woodland/Forest Hills	6	6	6	4	4	3	4	6	3
Middle Gasconade River Oak Woodland/Forest Breaks	6	6	6	6	4	4	4	6	4
Ft. Wood Oak Savanna/Woodland Plain	6	4	4	4	4	4	3	8	4
Middle Gasconade River Oak Woodland Benchland	6	4	4	4	4	4	3	8	4
Big Piney Hills Oak Woodland Dissected Plain	6	4	4	4	4	3	3	8	3
Upper Gasconade Hills Oak Woodland Dissected Plain	6	4	4	4	4	3	3	8	3
Upper Gasconade Oak Woodland Hills	6	6	6	4	4	3	4	6	3
Lower Gasconade River Oak Woodland/Forest Hills	6	6	6	4	4	3	4	6	3
Roubidoux Creek Oak Woodland/Forest Hills	6	6	6	4	4	3	4	6	3
Big Piney River Oak Pine Woodland Forest Hills	6	6	6	5	5	7	7	8	5
Little River Oak Pine Forest Hills	6	6	6	5	5	7	7	8	5
Big Piney Pine-Oak Woodland Dissected Plains	6	5	4	5	5	7	7	8	7
Meramec River Oak Forest Breaks	6	6	6	6	4	4	6	6	4
Cherryville Oak Savanna/Woodland Plain	6	4	4	4	4	3	3	8	3
Indian Prairie Oak Savanna/Woodland Plain	6	4	4	4	4	3	3	8	3
Fotosi Oak Savanna/Woodland Plain	6	4	4	4	4	3	3	8	3
Huzzah-Courtois Oak Woodland Dissected Plain	6	4	4	4	3	3	8	3	3
Big River Oak Woodland/Forest Hills	6	6	6	6	4	4	4	3	4
East Meramec Oak Woodland/Forest Hills	6	6	6	6	4	4	4	3	4
Huzzah Oak Woodland/Forest Hills	6	6	6	6	4	4	4	3	4